

Series TC pressure microregulators

For applications with oxygen, without relieving
Ports: cartridge construction, G1/8 and 1/8 NPTF

SERIES TC MICROREGULATORS



- » Compact design
- » High performance
- » Easy to install
- » Materials suitable with several gases

The Series TC pressure regulator has been designed to be used for all the applications and equipment where it is needed to insert the single component in customized integrated pneumatic circuits (manifolds) or collectors.

The cartridge design and the compact size allow the regulator to be plugged in a proper seat, making the installation easier and reducing the assembly time. To produce the new TC regulator, materials have been analyzed and chosen on the basis of their suitability with the contact medium. The body in PPS and the seals in FKM ensure thus full compatibility with a wide range of gaseous fluids.

GENERAL DATA

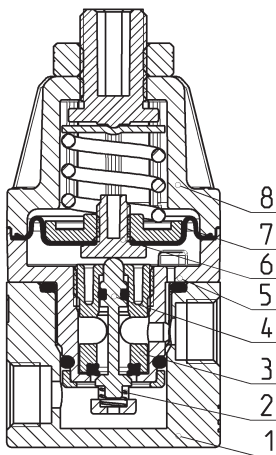
Construction	compact with pre-formed diaphragm
Materials	see the TABLE OF MATERIALS on the following page
Ports	cartridge construction in manifold - G1/8 or 1/8NPTF (aluminium body version only)
Mounting	in-line or cartridge (any position)
Operating temperature	-5°C ÷ 50°C
Inlet pressure	0 ÷ 10 bar
Outlet pressure	0.03 ÷ 0.5 bar 0.1 ÷ 2 bar 0.15 ÷ 3 bar 0.2 ÷ 4 bar
Overpressure exhaust	without relieving
Nominal flow	see FLOW DIAGRAMS on the following pages
Medium	air, inert and medical gases, OXYGEN
Repeatability	±0.2% FS

CODING EXAMPLE

TC	1	-	R	3	1	-	C	-	V	-	OX2
TC	SERIES										
1	SIZE										
R	REGULATOR										
3	WORKING PRESSURE: 1 = 0.03 ÷ 0.5 bar 2 = 0.1 ÷ 2 bar 3 = 0.15 ÷ 3 bar 4 = 0.2 ÷ 4 bar										
1	TYPE OF CONSTRUCTION: 1 = without relieving										
C	PORTS: C = Cartridge 1/8 = G1/8 1/8TF = 1/8NPTF										
V	SEALS MATERIAL: V = FKM										
OX2	VERSIONS: OX1 = for oxygen (non-volatile residue lower than 550 mg/m³) OX2 = for oxygen (non-volatile residue lower than 33 mg/m³)										

SERIES TC MICROREGULATORS

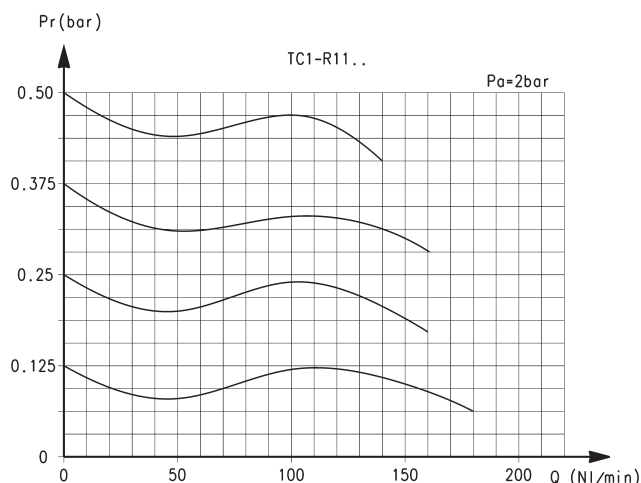
Series TC pressure microregulators - materials



PARTS	MATERIALS
1. Base body	Anodized aluminium
2. Lower spring	Stainless steel
3. Insert	PPS
4. Poppet	Stainless steel
5. Body	PPS
6. Valve guide	PPS
7. Diaphragm	FKM
8. Bell	Polyamide
Seals	FKM

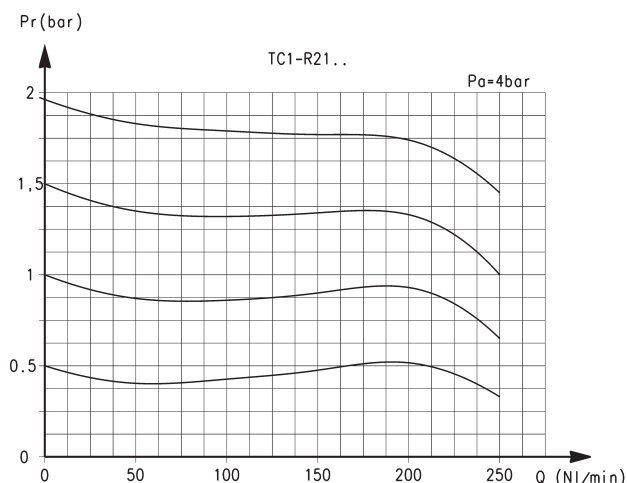
FLOW DIAGRAMS - 0.5 and 2 bar working pressure

SERIES TC MICROREGULATORS



Pr = Regulated pressure (bar)
Q = Flow (NL/min)

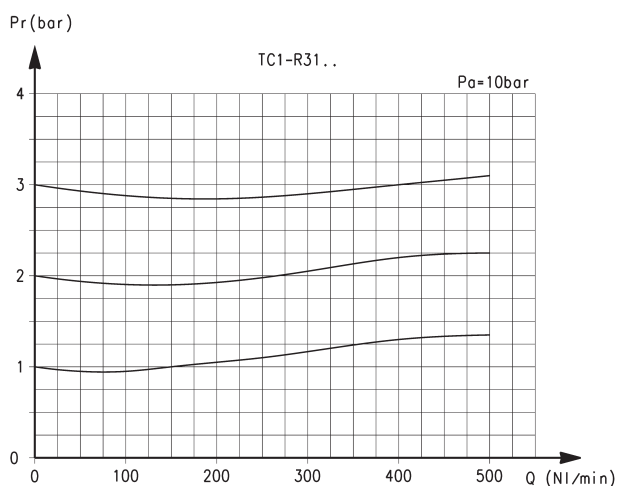
Pa = Inlet pressure (bar)



Pr = Regulated pressure (bar)
Q = Flow (NL/min)

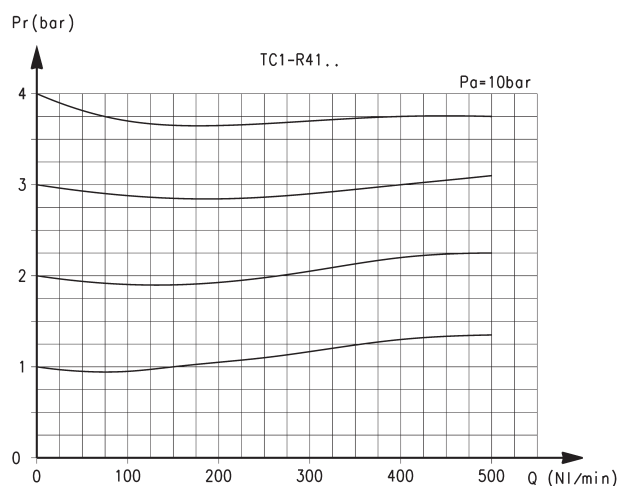
Pa = Inlet pressure (bar)

FLOW DIAGRAMS - 3 and 4 bar working pressure



Pr = Regulated pressure (bar)
Q = Flow (NL/min)

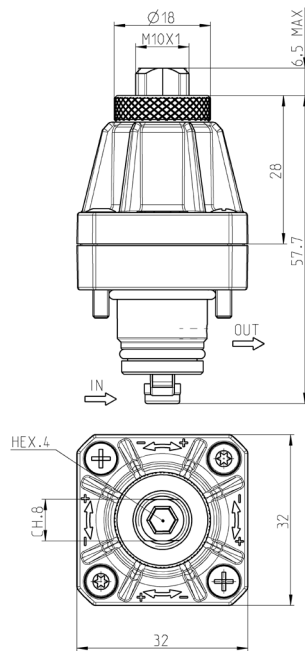
Pa = Inlet pressure (bar)



Pr = Regulated pressure (bar)
Q = Flow (NL/min)

Pa = Inlet pressure (bar)

Series TC cartridge pressure microregulators



Mod.
TC1-R11-C-V-OX1
TC1-R11-C-V-OX2
TC1-R21-C-V-OX1
TC1-R21-C-V-OX2
TC1-R31-C-V-OX1
TC1-R31-C-V-OX2
TC1-R41-C-V-OX1
TC1-R41-C-V-OX2

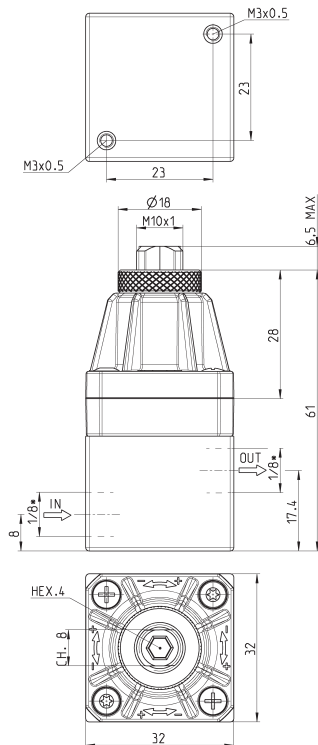


PR01 = regulator without relieving

Series TC pressure microregulators with aluminium body



* to choose the type of thread (G1/8 or 1/8 NPTF)
see the Coding example



Mod.
TC1-R11- \varnothing -V-OX1
TC1-R11- \varnothing -V-OX2
TC1-R21- \varnothing -V-OX1
TC1-R21- \varnothing -V-OX2
TC1-R31- \varnothing -V-OX1
TC1-R31- \varnothing -V-OX2
TC1-R41- \varnothing -V-OX1
TC1-R41- \varnothing -V-OX2



PR01 = regulator without relieving

Seat dimensions for cartridge version

SERIES TC MICROREGULATORS

