

# Series MX coalescing filters

MX2 ports: G3/8, G1/2, G3/4 - MX3 ports: G3/4, G1  
Modular

Bowl with technopolymer cover and bayonet-type mounting



- » High performance and compressed air quality (according to ISO 8573-1)
- » Quality of delivered air according to ISO 8573-1:2010, Classes 1.8.1 and 2.8.2
- » Manual, automatic or depressing drain
- » Polymer bowl locking system
- » Visual blockage indicator

The Series MX air treatment components are characterized by a modern, linear and compact design, offering high performances. The perfect integration between metal alloys and technopolymers has allowed the realization of a reliable product, light and strong at the same time. Thanks to a new concept of modularity, moreover, the mounting of components has become easier.

The Series MX has been realized to offer a multi-sector solution that guarantees saving in terms of installation time, space and costs.

A special configurator, available on Camozzi website at <http://catalogue.camozzi.com> (sec. Configurators), allows the customer to choose the most suitable solution for his application, selecting single components or by configuring assembled FRLs.

## GENERAL DATA

Construction	modular, compact	
Materials	see TABLE OF MATERIALS on the following page	
Ports	MX2: G3/8, G1/2, G3/4 - MX3: G3/4, G1	
Condensate capacity	MX2: 55 cm <sup>3</sup> - MX3: 85 cm <sup>3</sup>	
Mounting	vertical in-line or wall-mounting (by means of clamps)	
Operating temperature	-5°C ÷ 50°C up to 16 bar (with the dew point of the fluid lower than 2°C at the min. working temp.) -5°C ÷ 60°C up to 10 bar (with the dew point of the fluid lower than 2°C at the min. working temp.)	
Draining of condensate	manual-semi automatic (standard), automatic, depressurization protected, direct G1/8 exhaust	
Operating pressure	0.3 ÷ 16 bar (with automatic drain 1.5 ÷ 12 bar)	
Nominal flow	see FLOW DIAGRAMS on the following pages	
Quality of delivered air according to ISO 8573-1:2010	Class 2.8.2 with 1 µm filtering element; Class 1.8.1 with 0.01 µm filtering element	
Residual oil content with inlet at 3 mg/m <sup>3</sup>	< 0.01mg/m <sup>3</sup> < 0.1mg/m <sup>3</sup>	
Oil retain efficiency	99.80%	97%
Particles retain efficiency	99.9999%	99.999%
Fluid	compressed air	
Pre-filtering with filtering element of 1µm	it is recommended to use a filter of 5µm	
Pre-filtering with filtering element of 0.01µm	it is recommended to use a filter of 1µm	

## CODING EXAMPLE

<b>MX</b>	<b>2</b>	<b>-</b>	<b>1/2</b>	<b>-</b>	<b>FC</b>	<b>0</b>	<b>0</b>	<b>1</b>	<b>-</b>	<b>LH</b>
-----------	----------	----------	------------	----------	-----------	----------	----------	----------	----------	-----------

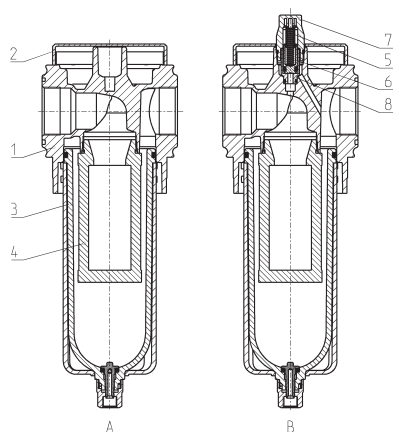
<b>MX</b>	SERIES
<b>2</b>	SIZE: 2 = G3/8 - G1/2 - G3/4 3 = G3/4 - G1
<b>1/2</b>	PORTS: 3/8 = G3/8 1/2 = G1/2 3/4 = G3/4 1 = G1
<b>FC</b>	COALESCING FILTER
<b>0</b>	FILTERING ELEMENT: 0 = 0,01 µm (standard) 1 = 1 µm
<b>0</b>	DRAINING OF CONDENSATE (further details in the dedicated section): 0 = semiautomatic-manual drain (standard - only for polymer bowl) 3 = automatic drain 5 = depressuring drain, protected (only for polymer bowl) 8 = without drain, with port G1/8
<b>1</b>	VISUAL BLOCKAGE INDICATOR: = not present 1 = present
<b>LH</b>	FLOW DIRECTION: = from left to right (standard) LH = from right to left

For the assembly of a single component with fixing flanges or wall-mounting, see the section "FRL Series MX Assembled"

## Coalescing filters Series MX - materials

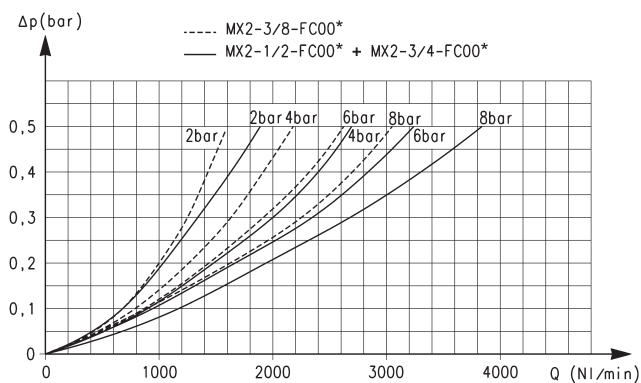
A = Filter

B = Filter with visual blockage indicator



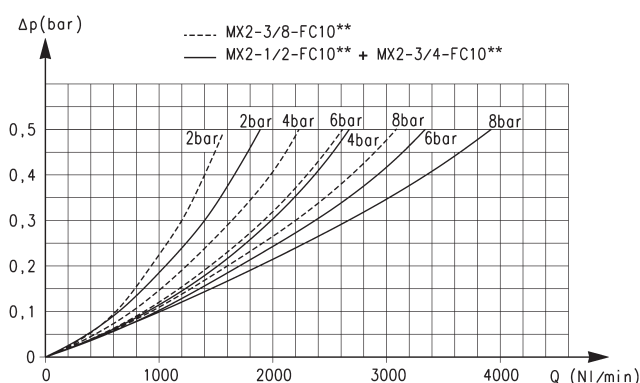
PARTS	MATERIALS
1 = Body	Aluminium
2 = Covering	Polyacetal
3 = Bowl / bowl cover	Polycarbonate/Polyamide
4 = Filtering element	Borosilicate
5 = Upper spring	Stainless steel
6 = Piston	Anodized aluminium
7 = Visual blockage indicator	Polycarbonate
8 = Indicator body	Brass
Seals	NBR

## MX2 COALESCING FILTERS FLOW DIAGRAMS



\* Reference diagram for models with filtering element = 0.01 µm

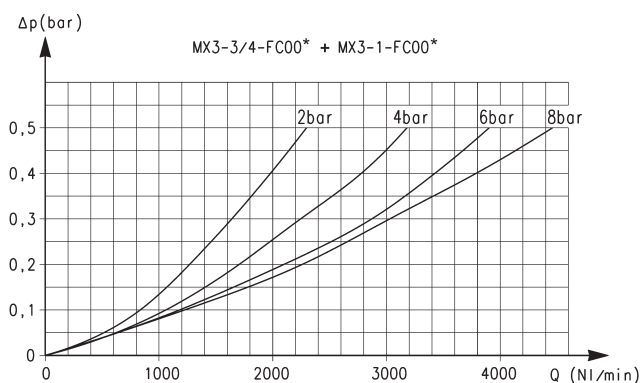
Δp = Pressure drop (bar)  
Q = Flow (NL/min)



\*\* Reference diagram for models with filtering element = 1 µm

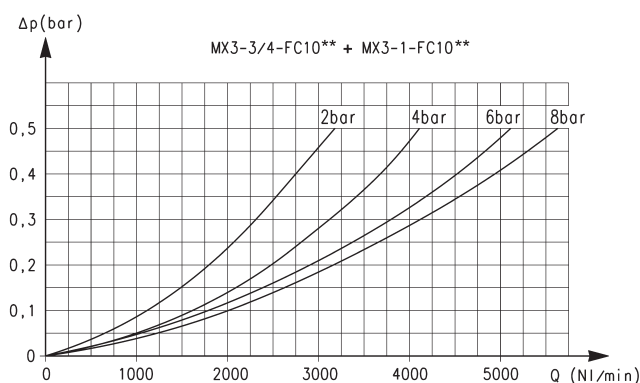
Δp = Pressure drop (bar)  
Q = Flow (NL/min)

## MX3 COALESCING FILTERS FLOW DIAGRAMS



\* Reference diagram for models with filtering element = 0.01 µm

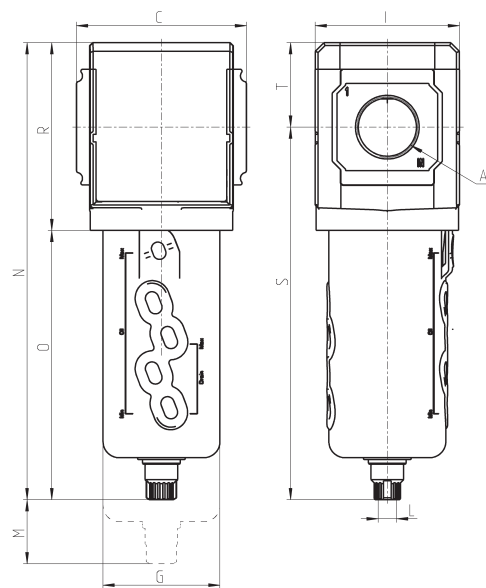
Δp = Pressure drop (bar)  
Q = Flow (NL/min)



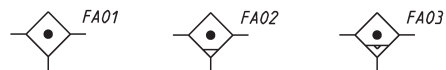
\*\* Reference diagram for models with filtering element = 1 µm

Δp = Pressure drop (bar)  
Q = Flow (NL/min)

Coalescing filters Series MX - dimensions



Mod.	A	C	G	I	L	M	N	O	R	S	T	Weight (Kg)
MX2-3/8-FC00	G3/8	70	55.3	68	G1/8	52	212	127	85	174.5	37.5	0.5
MX2-1/2-FC00	G1/2	70	55.3	68	G1/8	52	212	127	85	174.5	37.5	0.5
MX2-3/4-FC00	G3/4	70	55.3	68	G1/8	52	212	127	85	174.5	37.5	0.5
MX3-3/4-FC00	G3/4	89.5	61.5	76	G1/8	75	241	142	99	196.5	44.5	0.8
MX3-1-FC00	G1	89.5	61.5	76	G1/8	75	241	142	99	196.5	44.5	0.8

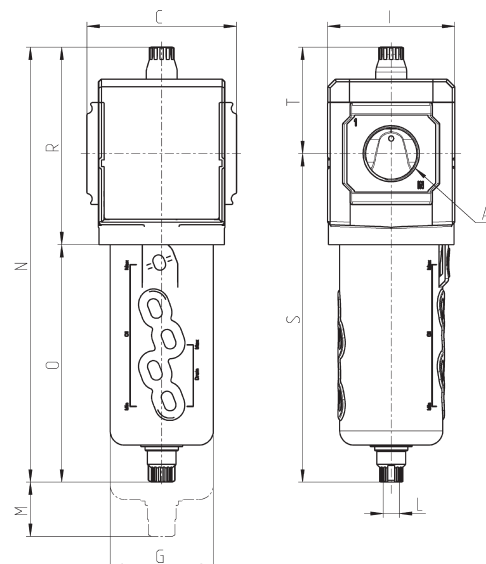


FA01 = coalescing filter without drain with port G1/8

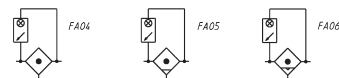
FA02 = coalescing filter with semi-automatic manual drain

FA03 = coalescing filter with automatic or depressuring drain

Coalescing filters with visual blockage indicator Series MX - dimensions



Mod.	A	C	G	I	L	M	N	O	R	S	T	Weight (Kg)
MX2-3/8-FC001	G3/8	70	55.3	68	G1/8	52	231	127	104	174.5	56.5	0.5
MX2-1/2-FC001	G1/2	70	55.3	68	G1/8	52	231	127	104	174.5	56.5	0.5
MX2-3/4-FC001	G3/4	70	55.3	68	G1/8	52	231	127	104	174.5	56.5	0.5
MX3-3/4-FC001	G3/4	89.5	61.5	76	G1/8	75	260	142	118	196.5	63.5	0.8
MX3-1-FC001	G1	89.5	61.5	76	G1/8	75	260	142	118	196.5	63.5	0.8



FA04 = coalescing filter without drain, with port G1/8 and visual blockage indicator

FA05 = coalescing filter with semi-automatic manual drain and visual blockage indicator

FA06 = coalescing filter with automatic or depressuring drain and visual blockage indicator